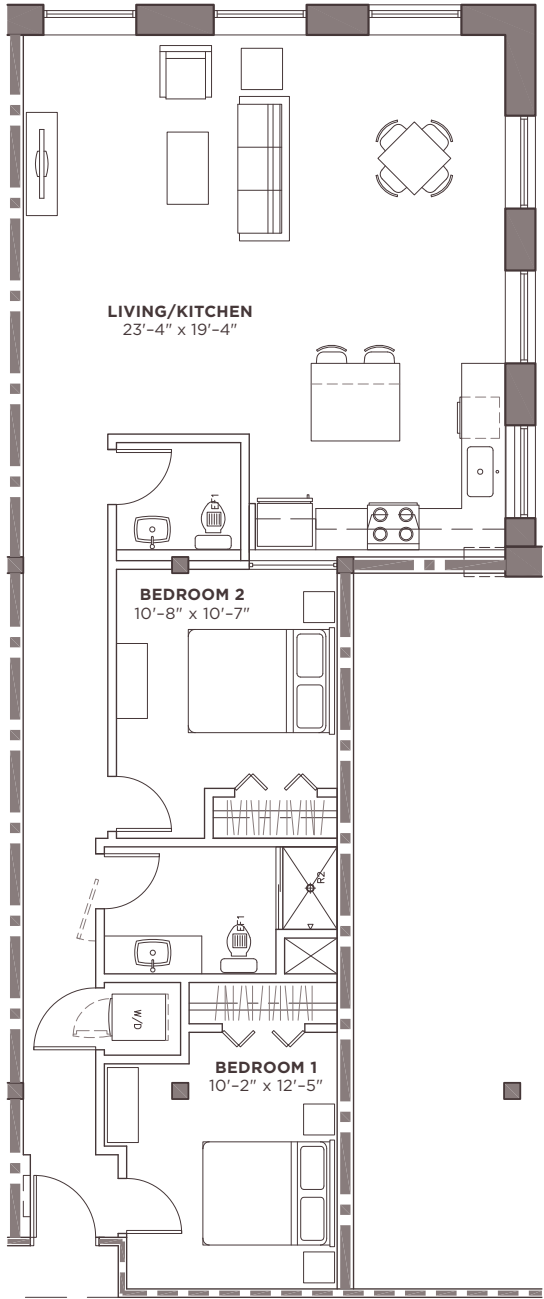


# LOFTS

AT ROCKY MOUNT MILLS



## TYPE B2 APARTMENT

2 BED | 1.5 BATH  
1,116 SQ FT

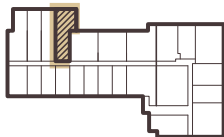
### FEATURES

#### HISTORIC BUILDING

- Exposed Brick
- Historic Beams & Columns
- Hardwood Floors
- Vaulted Ceilings
- Expansive Windows

#### MODERN AMENITIES

- Recycled Glass Counters
- Stainless Steel Appliances
- Washer/ Dryer in Unit
- Ceramic Tiled Bathrooms



2ND  
FLOOR

PHONE NUMBER | 252.969.0909

**ROCKY  
MOUNT**  
=MILLS=

EMAIL | [LEASING@ROCKYMOUNTMILLS.COM](mailto:LEASING@ROCKYMOUNTMILLS.COM)